

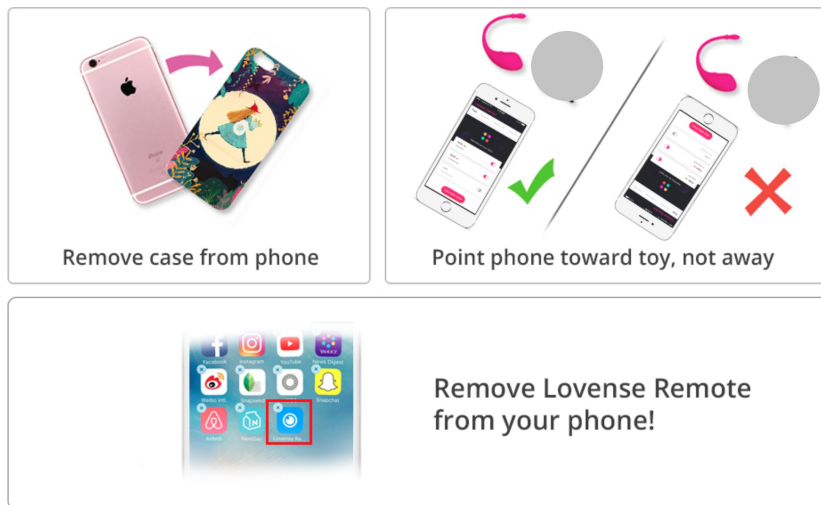
Why does my Lovense toy have a weak connection?

Last Modified on 10/15/2020 11:00 am EDT

If your Lovense toy shows on your phone as having a weak connection, this issue is not related to ManyVids specifically so you may need to contact [Lovense Support](#) for further assistance, but for maintaining a stable connection, Lovense give the following suggestions:

- Make sure the phone is facing towards your toy
- Remove your phone case
- Delete the Lovense Remote app from your phone (don't delete the Lovense Connect app as you'll need this to connect to MV)

I How to keep a stable connection



If your Lovense toy is disconnecting from MV Live,[check here!](#)

If your Lovense icon is flashing yellow in your live room,[click here!](#)

